

Plants of the Yolo Bypass Wildlife Area



Charlie Russell
Charlie@ibrakeforwildflowers.com
<https://ibrakeforwildflowers.com/>

Charlie Russell
NATURE PHOTOGRAPHY



Charlie's Guidelines on YBWA Plants

- I will focus on the *publicly accessible* areas
- YBWA has a wide variety of plant habitats
- There are over 500 species of plants ID'd in the YBWA
 - 380 of those are native to California
 - Non-natives are often more abundant
 - I am **not** going to show you photos of every plant
 - I won't always ID plants all the way to *species*
- All photos were taken by me in the YBWA (except as noted)



Wetland/Aquatic



Rice

White rice: *Oryza sativa* (Asia)

Wild rice: *Zizania* spp. (North America)



Watergrass

- Aka Jungle rice, Barnyard grass
- Several species, hard to distinguish
- Usually in rice paddies
- Non-native (Eurasia)
- *Echinochloa crus-galli* and others



Cattail



Native

- Three kinds
 - Broadleaf, *Typha latifolia* (most common, no gap) worldwide, native
 - Narrowleaf, *Typha angustifolia* (gap) worldwide, *native or introduced?*
 - Southern, *Typha domingensis* (gap, lighter) worldwide, native
- Common, flat leaf blade, hotdog on a stick
- Can be 250,000 seeds in one head

Arrowhead

- Aka tule or duck potato
- Late in season in rice paddies
- Native, North/South America
- *Sagittaria latifolia* (broadleaf arrowhead)
- *Sagittaria longiloba* (long lobed arrowhead)



Burhead

- Native, North/South America
- *Echinodorus berteroi*



Lanceleaf water plantain

- Non-native, Eurasia
- *Alisma lanceolatum*



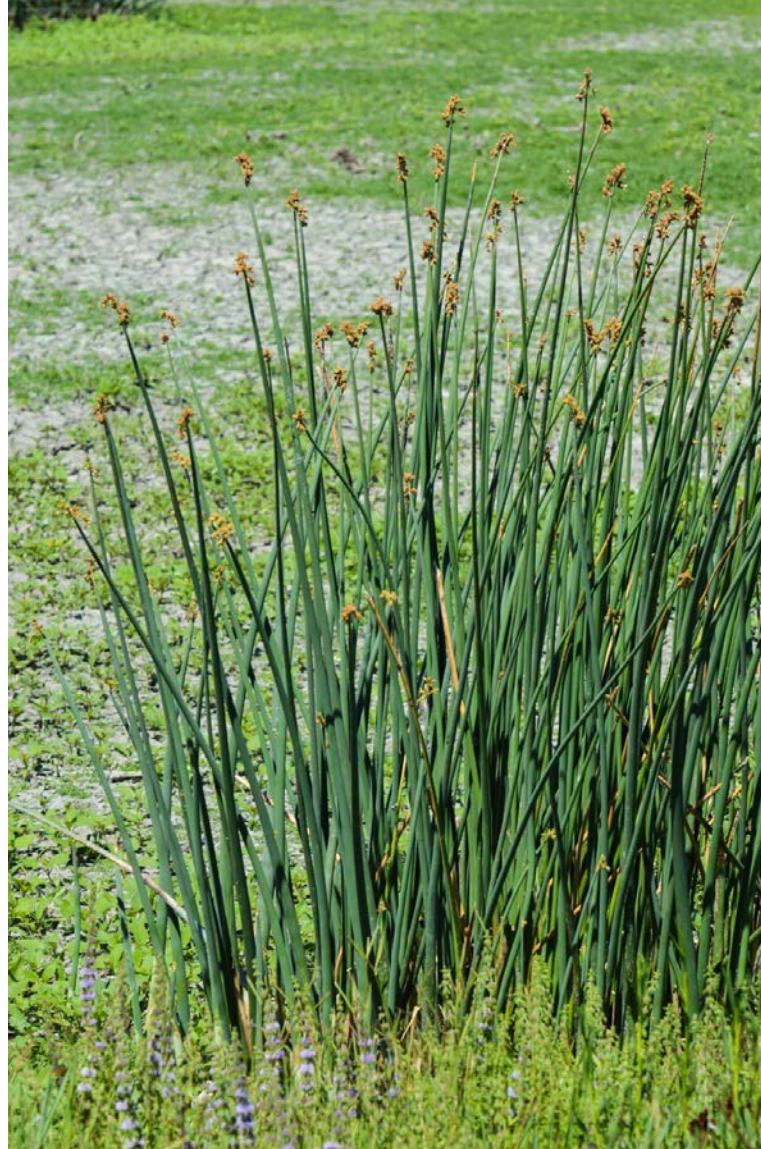
Gila river waterhyssop

- Native, California/Nevada
- *Bacopa eisenii*



Tule

- Aka Hardstem Bulrush
- Native, North America
- Round stem
- Building material, boats, baskets. Starchy rhizome for food
- *Schoenoplectus acutus* var. *occidentalis*



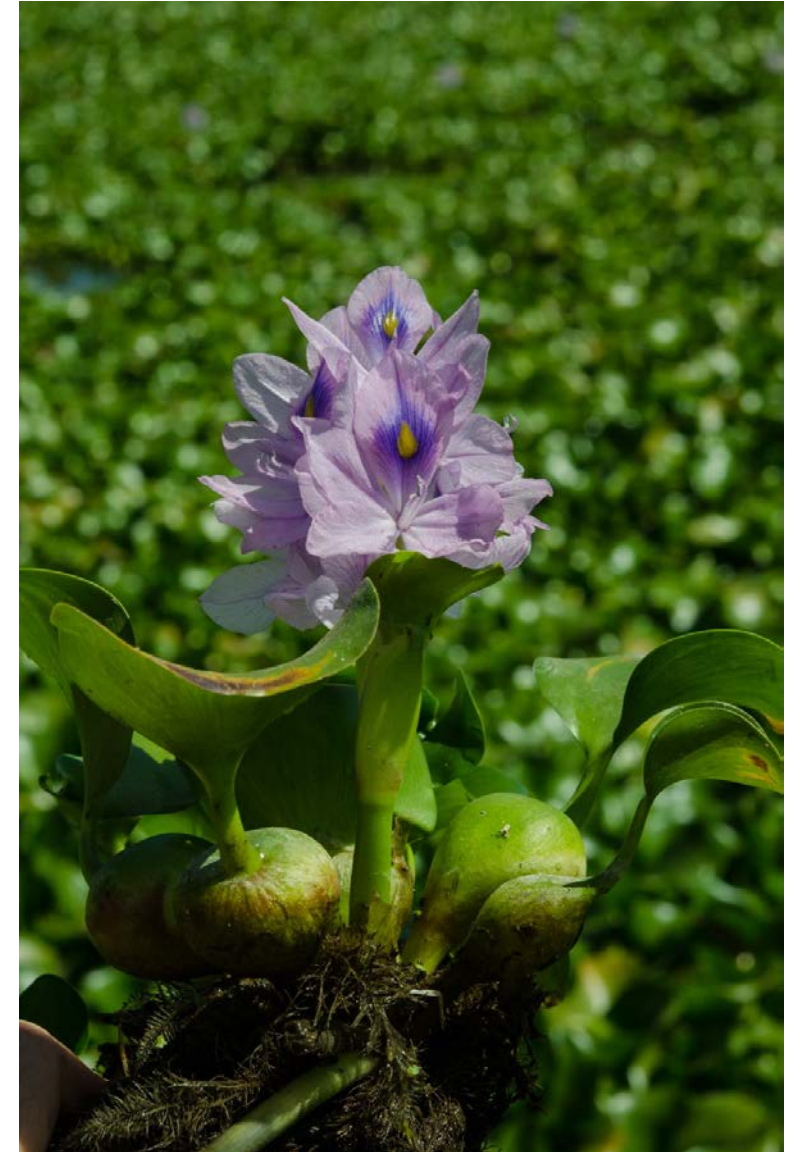
Floating Primrose Willow

- Non-native (southwest US? Worldwide)
- Invasive
- *Ludwigia hexapetala*,
Ludwigia peploides
(two subspecies)



Common water hyacinth

- Found in the Toe Drain
- Invasive
- Non-native (tropical America)
- *Eichhornia crassipes*



Water Fern

- Fern
- Native (worldwide?)
- *Azolla filiculoides*
- Association with *Nostoc azollae*



Water's Edge



Lady's thumb

- *Persicaria maculosa*
- Maybe spot on top of leaf, usually pink to rose colored flower
- Longer bristles on ocrea margins
- Non-native (Eurasia)



Willow Weed

- aka Common knotweed
- *Persicaria lapathifolia*
- White to pink
- Inflorescence nodding
- Native (world wide)



Tall Flatsedge

- Native (Americas)
- *Cyperus eragrostis*



Yellow nutsedge

- Native (world wide)
- *Cyperus esculentus*



Toothpickweed

- Non-native (Eurasia/Africa)
- *Ammi visnaga* (*Visnaga daucoides*)
- Easily confused with Queen Anne's Lace (*Daucus carota*) but *stem/seeds not hairy*



Poison hemlock

- *Conium maculatum* (Mediterranean)
- All parts of plant are very toxic, causes respiratory and renal failure.
- Non-native, invasive
- Note the mottled color on stems
- Looks very similar to Toothpick plant



Nightshade

- American Black Nightshade, *Solanum americanum* (native)
- Black Nightshade (non-native), *Solanum nigrum*
- May just be one species?
- Toxic
- Found in the Americas, Australia, others



Solanine,
solamargine,
chaconin,
solasonine,
solanigrine,
gitogenin,
saponins,
scopolamine,
atropine,
hyoscyamine,
acetylcholine



Velvet leaf

- Non-native (southern Asia)
- Wonderful velvety leaves
- *Abutilon theophrasti*



Broadleaved Peppergrass

- Non-native (Mediterranean to Asia)
- Very invasive, becoming a problem in wetlands, crowds out native plants
- *Lepidium latifolium*



Pacific aster

- Native (west coast North America)
- *Symphyotrichum chilense*

Suisun marsh aster

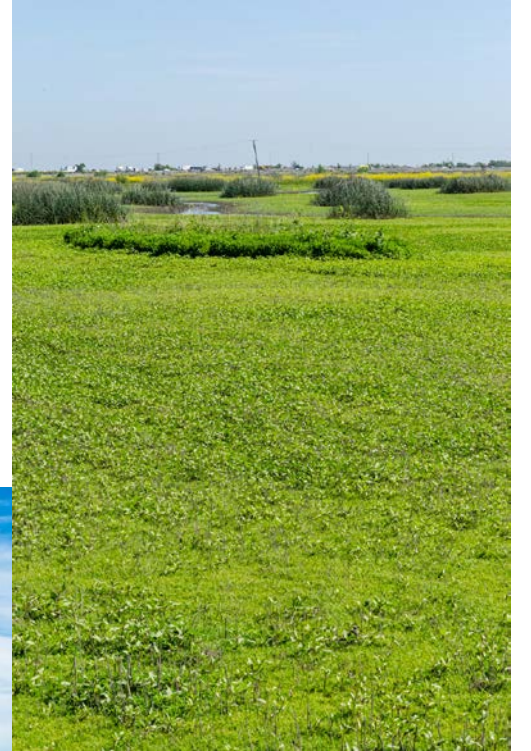
- Native (Sacramento valley, central coast)
- *Symphyotrichum lentum*
- CNPS rare plant rank 1B.2

Annual saltmarsh aster

- Native/Non-native (East US to Texas)
- *Symphyotrichum subulatum*



Grassland / Dry Ponds



Pennyroyal

- Non-native (Mediterranean)
- *Mentha pulegium*
- Toxic
- Oil used as insect repellent



Swamp pricklegrass

- Aka Swamp timothy
- Non-native (Europe)
- Good foraging for birds
- *Crypsis schoenoides*





Barley, *Hordeum*
sp. (some native)



Canarygrass, *Phalaris*
sp. (some native)



Rabbitfoot Grass
Polypogon monspeliensis



Slender wild oat, *Avena*
barbata (probably)



Italian rye, *Festuca*
perennis

Non-native grasses (mostly)

Cocklebur

- Native (North America)
- “Velcro plant”
- *Xanthium strumarium*



Flat-faced Downingia

- Native
- Endemic to California
- *Downingia pulchella*
- Vernal pool plant



Dodder

- Parasitic vine, no chlorophyll, no roots
- Native
- Can be a small patch, or sometimes a whole field
- Can spread vegetatively (mowing, discing)
- *Cuscuta* spp.



Vetch

- Non-native
- Spring vetch, *Vicia sativa*
- Hairy vetch, *Vicia villosa*



Roadside/Ruderal



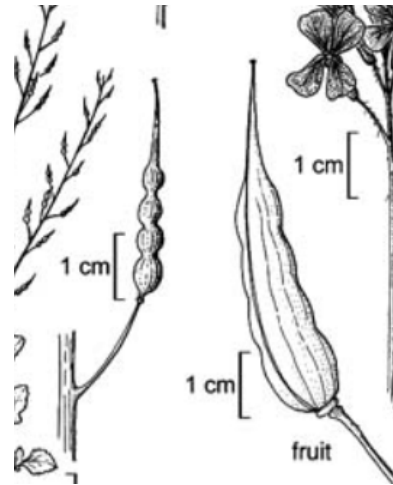
Puncture vine

- *Tribulus terrestris*
- Non-native (Mediterranean)
- Vegetation may be toxic to livestock



Wild Radish

- Non-native (Mediterranean)
- *Raphanus sativus* generally pink to purple (white), fruit \pm constricted
- *Raphanus raphanistrum* pale yellow (white), fruit with strong constrictions



Chicory

- Non-native (Mediterranean)
- *Cichorium intybus*



Common Sunflower

- Native (North America)
- *Helianthus annuus*
- Same species as cultivated



Long-horned digger bees
Photo by Martha Ozonoff

Dog fennel

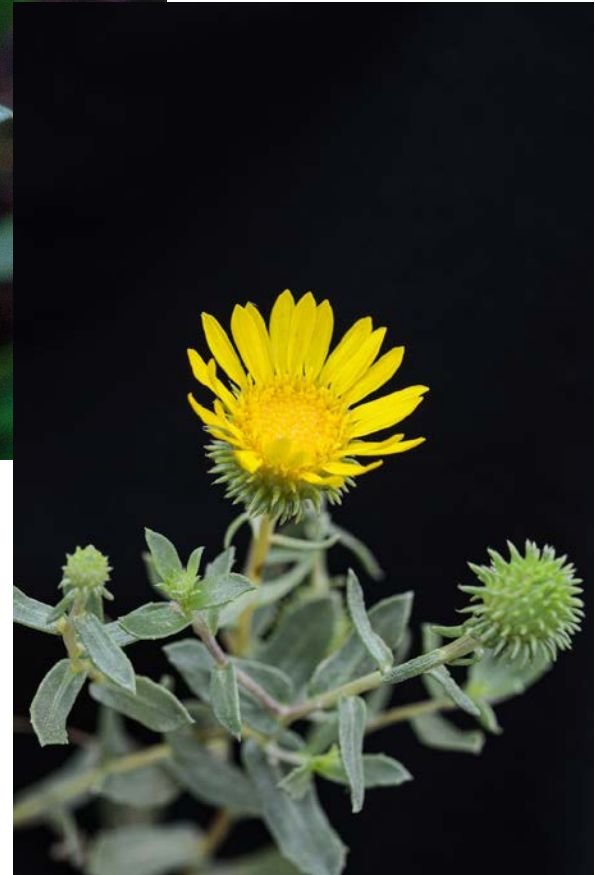
- Non-native (Mediterranean)
- Resinous smell (foilage)
- *Anthemis cotula*



Gumweed

Aka Gumplant

- *Grindelia camporum* var. *camporum*
- Native (western North America)
- Medicinal uses, lung congestion and others
- Possibly a mild hallucinogen?
- Spiky buds and sometimes see “gum” in center



Mustard

- Non-native (Mediterranean)
- Black mustard, *Brassica nigra*
- Field mustard, *Brassica rapa* subsp. *oleifera*
- Shortpod mustard, *Hirschfeldia incana*
- Curvepod yellowcress, *Rorippa curvisiliqua*
- Charlock mustard, *Sinapis arvensis*
- California mustard, *Caulanthus lasiophyllus* (white) **native**



White Sweet Clover

- *Melilotus albus*
- Non-native (Eurasian)

Yellow Sweet Clover

- *Melilotus indica*
- Non-native (Eurasian)



Milk Thistle →

- Non-native (Mediterranean)
- *Silybum marianum*



← Bull Thistle

- Non-native (Europe/Mediterranean)
- *Cirsium vulgare*



Italian Thistle →

- Non-native (Mediterranean/Asia)
- *Carduus pycnocephalus*



Mallows



- Alkali mallow, *Malvella leprosa* (native, Americas)



- Bull mallow, *Malva nicaeensis* (non-native, Mediterranean)
- Cheeseweed, *Malva parviflora* (non-native, Mediterranean)



Turkey Tangle Fogfruit

- Aka Lippia
- Usually a low mat on exposed ground, but in moister area can be taller
- Native (Americas)
- *Phyla nodiflora*



Yellow Star Thistle

- Non-native (Mediterranean)
- Major invasive in grasslands in California
- *Centaurea solstitialis*



Jimson weed

- *Datura stramonium*, Non-native (Central America)
- *Datura wrightii*, Native (southern USA, Central America)
- Aka locoweed, Devil's trumpet, thorn apple and more
- All parts are toxic, but flower/seed most of all



Field bindweed

- Non-native (Europe)
- Invasive
- Twining vine
- *Convolvulus arvensis*



Bristly Oxtongue



Sowthistle



Wild Lettuce



Wild Lettuce

- Non-native (Mediterranean)
- Prickly Lettuce, *Lactuca serriola*
- Narrow Leaved Wild Lettuce, *Lactuca saligna*



Sowthistle

- Non-native
(Mediterranean)
- Prickly Sowthistle,
Sonchus asper
- Common Sow-Thistle,
Sonchus oleraceus



Bristly Oxtongue

- Non-native (Mediterranean)
- *Helminthotheca echioides*



Questions?

ID Resources

<https://www.calflora.org/>

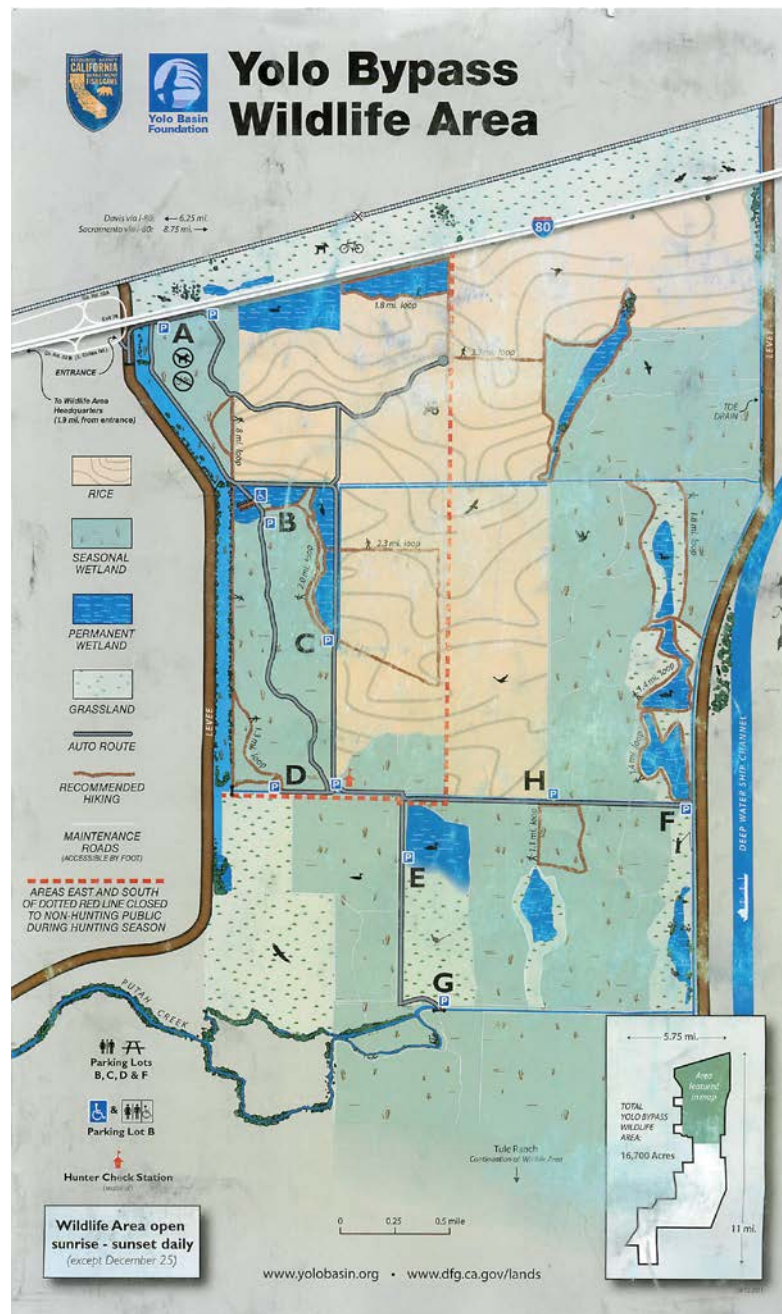
<https://www.inaturalist.org/>

Charlie Russell

Charlie@ibrakeforwildflowers.com

<https://ibrakeforwildflowers.com/>

<https://www.facebook.com/CaliforniaWildflowerHikes>



Santa Barbara sedge,
Carex barbarae

Questions?

ID Resources

<https://www.calflora.org/>

<https://www.inaturalist.org/>

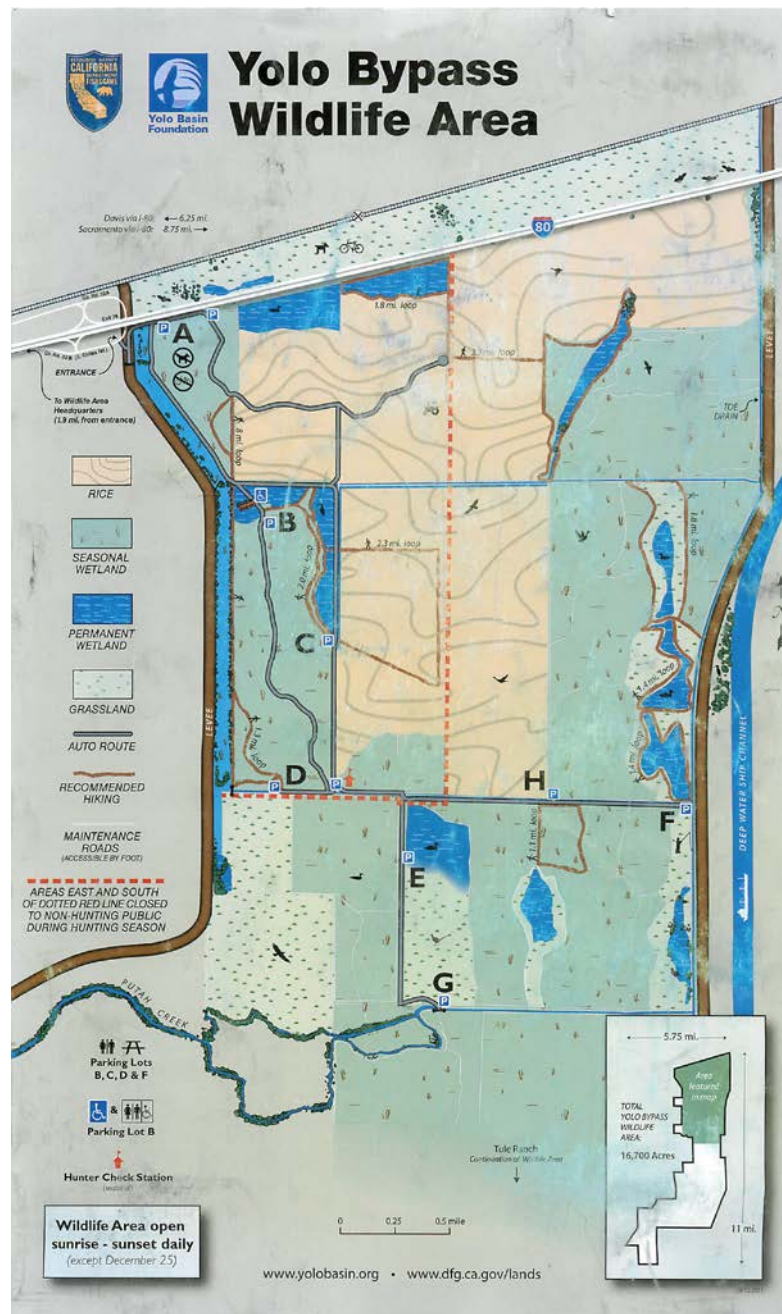
Charlie Russell

Charlie@ibrakeforwildflowers.com

<https://ibrakeforwildflowers.com/>

<https://wildflowers.russellramblings.com/>

<https://www.facebook.com/CaliforniaWildflowerHikes>



Prostrate knotweed,
Polygonum aviculare

Riparian

Boxelder

- Native
- *Acer negundo*
- Seeds toxic to horses



Fremont Cottonwood

- Native
- *Populus fremontii*



Oregon ash

- Native
- *Fraxinus latifolia*

Velvet ash

- Native
- *Fraxinus velutina*



Willow

- Narrowleaf willow (*Salix exigua*)
- Goodings willow (*Salix gooddingii*)
- Pacific willow (*Salix lasiandra*)
- Arroyo willow (*Salix lasiolepis*)
- All are native
- Beavers love them, look for chew marks



Coyote brush

- Native shrub
- Separate male and female plants (dioecious)
- *Baccharis pilularis*



Mule fat

- Native shrub
- Separate male and female plants (dioecious)
- Willow-like leaf, but toothed
- *Baccharis salicifolia*

